

Join us for the Autumn programme

Become a First Give
Partner School today!

The First Give programme inspires and empowers young people to take action to make a positive change in society. We are a charity that works in partnership with schools to deliver our innovative and interactive programme.

See the
following pages
for our Spring
programme
delivery model



Empowering young
people; igniting a spark
of social conscience.

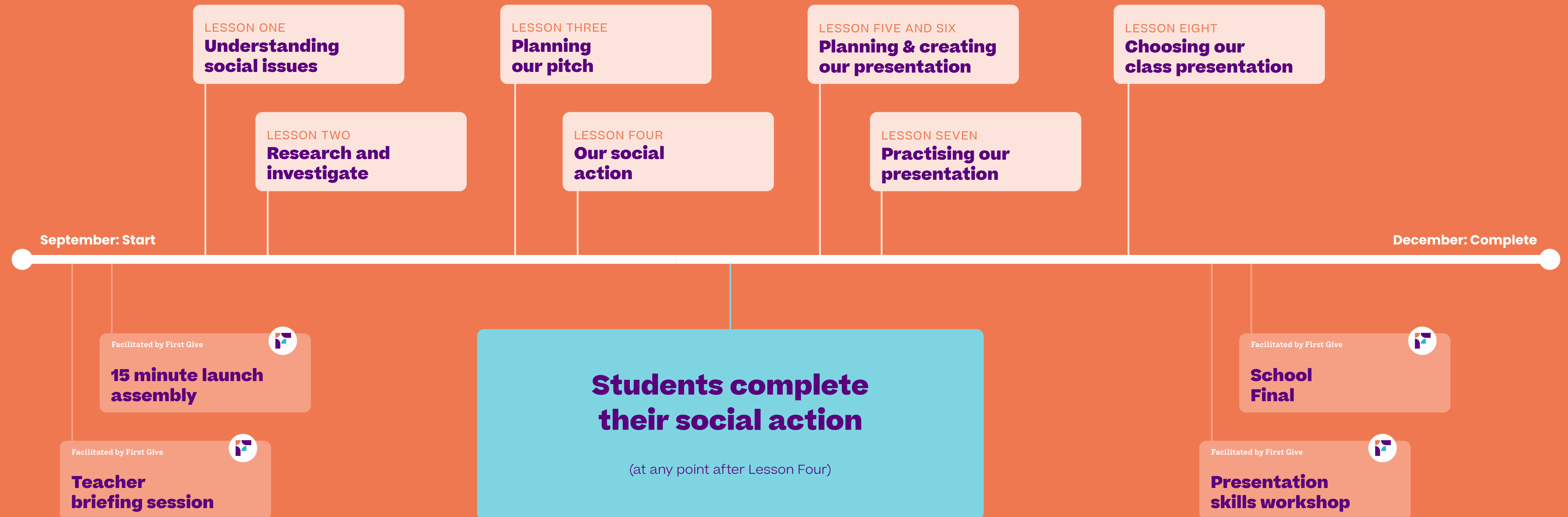
First Give Delivery

Start your First Give programme next Autumn term and deliver across eight dedicated classroom sessions (e.g. PSHE)

So, why join up for the Autumn programme?

Well, to start with, you'll kick off with our facilitated teacher briefing straight away in September, and end up with a fantastic end of term celebration at your First Give Final in December.

Your students can break up not only proud of the work they have done, but inspired by all their year group's local charity work and social action. And of course, your school's winning charity are likely to be particularly grateful for the timing of your students support and £1,000 donation!



The First Give Package

Your school contributes £750 to run First Give.
In return, you get:



All the resources you need to deliver the programme*

- ◆ Lesson plans and lesson briefing videos
- ◆ A scheme of work including Powerpoint presentations for each lesson
- ◆ A hard copy of our Student Coursebook for every student in the year group.

Four facilitated sessions from First Give*

- ◆ A teacher briefing session
- ◆ A Launch Assembly
- ◆ A Presentation Skills Workshop
- ◆ Your School Final.

Guaranteed grant of £1,000 for your winning class's charity.

* Alongside dedicated support throughout the programme from your programme manager

Become a First Give partner school today! "



Here's how!

To join our network of 200+ partner schools contact Loz, our First Give partnership lead at Loz@firstgive.co.uk

You can also find out more on our website [firstgive.co.uk](https://www.firstgive.co.uk)